



Mike's Mutterings

Those of you who have been to the Shed recently will have noticed the great new facility we have in the engineering area. For those who haven't, we have three virtually new shipping containers in the form of a horse shoe with a large canopy over the central space and the space between them concreted. This means we not only have an area for future engineering equipment storage, but also storage for projects which are waiting to be completed and those ready for returning to their owners, or for sale. The open space beneath the canopy will be used for engineering projects when they arise. We are extremely grateful for the grants and donations we have achieved to make this possible. I would also like to thank those members who spent a lot of time on this project over the past few months putting everything together. These have been Richard Wilde, Rob Lyons and Paul Zeeders with a lot of help from David Bagley. Thanks, Guys.

You may also notice that work has been going on behind this area to build a small shed in which to house our mower, and also another small shed behind Shed 1. This latter is to house the sawdust extraction units. As you will realise, we want to get the dust out of the building asap for health and maintenance reasons. All that needs doing now is for these two sheds to be painted. Work has started on this already. Once this is all completed we plan to invite our donors and sponsors to a morning tea to see how they contributed to this major project. This will probably take place after Easter. We'll let you know.

As you will see further in this Newsletter, we have been asked to support Kiribati by providing tools to recover spare parts from broken vehicles. Dick has managed to put together five steel boxes of tools which are surplus to us. We now need to get these to Drury in the next week for shipment. Anyone heading that way soon? We have been notified about changes to the Incorporated Societies Act which we need to have completed in 2026. This may seem a long way off but it needs work done on it now. We are also conscious that in a few years we shall need to move to new premises. We are quietly working on this in the background as well.

Our membership is now 64 . It's all happening at the Shed. Thanks for all your support.

Mike Hayden

Just a minute..... Notes from the Committee Meeting on 20 February:

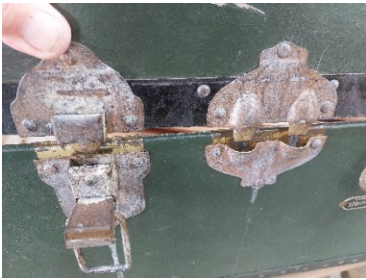
Five new members were approved – Rick Peers, Russell Prout, Adrian Tighe, John Clynes, and Brian Lamb. Welcome to the team! We look forward to you assisting in projects, or bringing along some personal projects.



I cut out the lid



Spent hours polishing metal



The locks were a challenge



I built a tray and supporting ledges, sourced the felt from Spotlight, felt glue from Oz, and the caster wheels from Bunnings.



I used windscreen glass, bicycle inner tubes as water sealers, CRC Clear Zinc to preserve the original metal look, 2 coats of undercoat, and 2 coats of top coat.



The Cooney Reserve Bird Hide project continues to rise out of the ground, thanks to the leadership and work of Peter Ehrlich, who has been assisted by community service workers. As can be seen on the right, the floor level, is starting to show the size and scope of the project. Well done, Peter!

Thanks to our sponsors and supporters:



The shed to house the air compressor has been almost completed. A smaller shed is also being built at the rear of the number 1 shed, to house the dust extractor.

Thanks to the team involved.



The project with Omokoroa No. 1 School has resumed. Ben and Hiki, who were with us last year, were soon back on the machines with confidence. This year they are making pickle ball bats which will be used at this school. What is pickle ball – very similar to pat-a-tennis that we played but with a plastic ball.

The Wood Database

Andrew McWilliam has brought to attention 'The Wood Database' - just google that name. If you have any queries about some wood that you are using – it may provide the answers. There is a wood filter which searches, sorts and filters 100's of wood from across the globe – a wood identification guide which is a common sense step by step guide to point you in the right direction and start identifying wood – and a wood allergies and toxicity guide which answers the question, "should you really be inhaling all that wood dust – and lots of other topics.



There's more than one supervisor down at Cooney Reserve!

CONTACT US

President - Mike Hayden
Mobile 021 247 8057
mchayden@xtra.co.nz

Vice Pres. - Dick Megchelse
Mobile 027 297 6157
info@menzshedomokoroa.org

FIND US

Address: 7 Prole Road, Omokoroa (first driveway on the left).

And on line

[facebook.com/Menzshed/Omokoroa](https://www.facebook.com/Menzshed/Omokoroa)

www.menzshedomokoroa.org



The Shed is open -

9 a.m. to 1 p.m.

Every Tuesday, Thursday and Saturday.

Trivia Questions -

1. What country drinks the most coffee per capita?
2. Where on your body would you find the cruciate ligament?
3. On what date was Te Tiriti o Waitangi/the treaty of Waitangi first signed?
4. Which 1976 film about Watergate did Robert Redford and Dustin Hoffman star in?
5. What nationality was Abel Tasman?
6. How many human players are there on each side in a polo match?
7. Which Kiwi band released a song called Nature in 1969?
8. *Owls Do Cry* (published in 1937) is the first novel by which New Zealand author?
9. What is the currency of Vietnam?
10. What car manufacturer had the highest revenue in 2020?

Now here's a thought.....

The Kiribati Solid Waste Management Programme (KSWMP) is funded by the NZ Ministry of Foreign Affairs and Trade (MFAT), and one of the issues being addressed is "dead cars". Kiribati is a Pacific Island 'microstate' in the equatorial region, where all the islands are low-lying atolls, only one having any elevation above a few metres. Car imports are around 1000 per year, virtually all being second hand small cars from Japan. As this is a marine environment, corrosion is extremely challenging. MFAT has funded a car crushing machine and a dead car collection, which are baled for export.

A sustainable long term operation is being set up, which is expected to bring in dead cars for wrecking before they become too corroded, and then of less value for recovering spare parts. The spare parts will be on-sold to the public, which will keep more cars going, hopefully cut the imports of more cars, and overall save the islanders money by keeping existing cars on the the road longer.

It is very hard to get reasonable tools there. Tools, such as spanners, sockets, hammers, and screwdrivers are very useful here. They want to equip each 'wrecker' with a tool box with basic tools so that they can go and work to strip parts off the cars. It is hoped the wreckers will take ownership and look after their own gear. Unused and excess tools here would be put to good use in Kiribati. All spanners etc are needed to be metric as it is entirely Japanese cars that will be dealt with. So metric spanners, sockets and drivers, screw drivers of any size, allen keys, steel hammers (both claw and ball-peen), small pry bars, small bolt cutters, hacksaws and blades, pliers, vice grips, cold chisels, drill sets, small and medium size files etc are



required, and tool boxes to put them in. They will sent to Kiribati in a container by the Project Manager In March.

We've made a start with five boxes underway. If you have any old tools that might assist, please drop them into the Shed.

- Answers -**
1. Finland
 2. Kne
 3. February 6 18402
 4. All The Presidents Men
 5. Dutch
 6. Four
 7. The Fourmyla
 8. Janet Frame
 9. Vietnamese Dong
 10. Volkswagen